



# HORSE SHOW

## HUNTERS & JUMPERS

### OCTOBER 6-10, 2021

**USEF PREMIER HUNTERS**  
**\$5,000 USHJA**  
**National Hunter Derby**

**JUMPERS ★★★**  
**\$10,000 NC State Fair**  
**Jumper Classic**

**Indoor Arenas • Permanent Stalls**  
**Penalty Begins Oct. 1, 2021 at Noon**

**The N.C. State Fair is a division of the**  
**N.C. Department of Agriculture & Consumer Services**  
Show presented by Triangle Farms, Inc.  
Joan Petty, Show Manager 919-556-7321  
trianglefarms.com • horseshows@trianglefarms.com

TRIANGLE FARMS  
HOSPITALITY

**EVERY SHOW MORNING • 7-9AM**

Coffee and Breakfast Goodies!

PLUS *Surprise Hospitality*

(Check the Sign in the Office!)

WINE? • CHEESE? • PIZZA? • CUPCAKES? • SANDWICHES?



**TRIANGLE FARMS**  
HORSESHOWS



**2021**  
**FALL SHOWS IN**  
**RALEIGH**

*Triangle Farms, Inc.*

*Joan Petty*

*(919) 556-7321 (919) 669-9877*

*horseshow@trianglefarms.com*

*www.trianglefarms.com*



*NC State Fair Hunter Jumper*

*Oct 6-10, 2021*

*USEF Premier 'AA' ~ Level 3\* Jumpers*

*Triangle Farms Indoors C Finale*

*Nov 5-7, 2021*

*NCHJA 'C' Equitation Finals*

*The 2021 Duke Shows*

*USEF Premier 'AA' ~ 4\* Jumpers*

*benefiting Duke Children's*

*Duke 'Jump for the Children' I*

*Nov 10-14, 2021*

*Duke 'Jump for the Children' II*

*Nov 17-21, 2021*

*Come Show With Us...*

# North Carolina State Fair Hunter Jumper Horse Show

October 6-10, 2021  
USEF Premier AA Rated Hunters  
Level 3\* Jumpers



Gov. James B. Hunt, Jr. Horse Complex  
4601 Trinity Road  
Raleigh NC 27607

*For information:*

*N.C. State Fair Hunter Jumper Show  
Triangle Farms, Inc.  
PO Box 33189  
Raleigh NC 27636  
919-556-7321  
866-337-4229 Fax  
(919) 839-4702 (during show only)*

Triangle Farms, Inc  
Horse Show Management  
Joan Petty ~ 919-669-9877  
[horseshows@trianglefarms.com](mailto:horseshows@trianglefarms.com)  
[www.trianglefarms.com](http://www.trianglefarms.com)

**Come show with us . . .**

**2021**  
**NC STATE FAIR**  
**HUNTER JUMPER**

*Judges and Officials*

**NC State Fair Hunter Jumper Show**  
**October 6-10, 2021**

**JUDGES AND OFFICIALS**

Judges	Kim Dorfman, Aiken, SC Walter J Lee, Keswick, VA Claudia Roland, Wellington, FL Jim Zulia, Wellington, FL
USEF Steward	Dorothy Trapp, Topsail Island, NC Mary Lynn Whitley, Cary, NC
Course Designer/Tech Coordinator	Charles Throckmorton, Ft. Collins, CO
Announcers	Charles Broadfoot Joel Riffkin Phillip Purcial Cathie Haller
Farrier	Andrea Lane, 959-929-4690
Veterinarian	3H Veterinary Services 919-363-1686
Medic	Claire Griffin
Stall Reservations	Sheri Bridges 919-556-7321 <a href="mailto:sheri@trianglefarms.com">sheri@trianglefarms.com</a>
Stall Manager	Steve Wilson
Show Secretary	Cathy Cortright Jane Labyack
Show Manager	Triangle Farms, Inc. Joan Petty 919-669-9877 <a href="mailto:horseshows@trianglefarms.com">horseshows@trianglefarms.com</a> <a href="http://www.trianglefarms.com">www.trianglefarms.com</a>
Show Office	During Show 919-839-4702 866-337-4229 NC State Fair Hunter Jumper Show Triangle Farms, Inc. PO Box 33189, Raleigh NC 27636
Show Fax	
US Mail Address	
Shipping Address/FedEx & UPS	NC State Fair Horse Complex Attn: Triangle Farms 4601 Trinity Road, Raleigh NC 27607

Enter Online ~ [www.horseshowsonline.com](http://www.horseshowsonline.com)

Management reserves the right to ADD or VARY the list of Officials if deemed necessary

**Directions**

Gov. James B. Hunt Horse Complex  
[4601 Trinity Rd, Raleigh, NC 27607](http://4601TrinityRd.com)

From I-40 west of Raleigh: Take exit 289 (Wade Ave), go .02 miles to Edwards Mill Rd Exit, turn right and go 1/4 miles, turn left at the stoplight onto Trinity Rd, Gate H4/Stable Entrance is on the right.

From I-440 Beltline: Take exit 4 onto Wade Ave, go 1 mile to Edwards Mill Rd Exit, turn left and go 1/4 miles to Trinity Rd, turn left at the stoplight onto Trinity Rd, Gate H4/Stable Entrance is on the right.



## Information, Rules & Regulations

**North Carolina State Fair Hunter Jumper Show** is a Regular Member Competition of the USEF, with Hunter Rating of Premier AA and Jumper Rating of Level 3\*. Every class offered herein which is covered by the Rules and Regulations of the current USEF Rule Book will be conducted and judged in accordance therein. The show will adhere to USEF guidelines with regard to the minimum number of entries required to maintain a class and updated Covid-19 Guidelines.

**Association Sanctioning:** The North Carolina State Fair Hunter Jumper Show is sanctioned by NCHJA, VHSA, SCHJA, MHSA, NAL and WIHS. Prize list, Entry Blank, Host Hotels and Business Sponsors are posted on [www.trianglefarms.com](http://www.trianglefarms.com). Show announcements, schedule, start times and entry numbers during the show are posted on [www.horseshowsonline.com](http://www.horseshowsonline.com).

**Entries:** **The Closing Date for entries is October 1st:** Late penalty fee of \$50 begins after the Closing Date. Online entries are accepted at [horseshowsonline.com](http://horseshowsonline.com). Visa, Master Card, American Express and Discover Credit Cards are accepted. All entries, showing and non- showing, must be made on the proper entry blank, pay the office/schooling fee, and be signed by the rider, trainer and the owner or agent. Full payment, stall payment, open check or credit card information must accompany entries, along with copies of measurement cards and membership cards. All horses are required to have a USHJA Registration number. Entry fees, less the service fee of \$50, will be refunded on presentation of a veterinarian's certificate proving inability of the horse to show. **Stall fees will not be refunded.**

**Health Requirements:** A negative Coggins test dated within one year is required for each entry, required by NC State law. Current Coggins must be displayed on the horse's stall. All horses on the grounds must comply with and provide proof of vaccinations per USEF GR845. No numbers will be released from the Office without Coggins and Vaccination Proof.

**Non-negotiable Checks:** Checks returned for any reason will be assessed a penalty of \$30 or 10% of the check amount, whichever is greater. Upon notification of a returned check, full payment including penalty must be paid in certified funds within 5 days. After 15 days, USEF will be notified.

**Prize Money/Refunds:** Prize money will be credited to the exhibitor's show bill. Any prize money in excess of the bill and refunds will be mailed within 30 days after the horse show.

**Measurement:** All Pony and Junior Hunter exhibitors must present their measurement cards at the Show Office before numbers will be released. Ponies and Junior Hunters without cards will be measured by a USEF Steward at the show.

**Stabling:** Permanent stalls with doors are available, beginning Monday Oct. 4 at 12 noon. The Stall Fee is \$225/stall. Stalls will not be reserved without full stall payment, open check or credit card information. No stall refunds will be made after the Closing Date. Non-stabled horses will be charged a \$50 grounds fee. **Trainers to complete and submit a Stabling Form for stall, feed & bedding orders at least 5 days before the show. Stable Order Form required for all exhibitors, including entries submitted online.**

**Feed, Hay and Bedding:** Pre-orders for feed, hay and bedding to be included on the Exhibitor Entry Blank or on the Stabling Form. All subsequent feed and bedding orders to be placed in the Show Office. All feed, bedding and tack stall splits must be completed by 12 noon on Friday.

**Class Entries and Schedule Changes:** To be posted at the show office and on [www.horseshowsonline.com](http://www.horseshowsonline.com) at the close of the office each day. The management reserves the right to reschedule, combine, close, add, delete or move any classes or change the announced officials as may be necessary and in the best interest of the show or for inclement weather. A rotating jump order to be used in all classes over fences. At no time will the rings be held up over 3 minutes due to conflicts. Should any question or disputes arise that are not provided for in the rules, the Show Manager's decision will be final.

**Schooling:** Schooling will be permitted in all show rings on Tuesday from 10am until 5pm. Flat work available in all rings each morning of the show, to close 1 hour prior to start time. Ticketed Warm Up to be available show days, schedule to be posted in the office. Lunging is not allowed in the show rings; lunging areas are available and to be posted.

**Camper Hook-ups:** Camper sites with water, power and sewer are available on a first come, first serve basis. Camper fees are collected by NC State Fair Security.

**Local Fire Regulations:** Parking of vehicles or horse trailers is not permitted in the fire lane adjacent to the stabling areas. NC State Fair Security patrols and tickets vehicles parked around the barns.

**Dogs and Cats:** All dogs and cats on the show grounds must be leashed and under control of the owner or responsible person. Violators will be fined \$100.

**Helmets:** Protective Headgear is required on all exhibitors when mounted on the grounds. Properly fitted protective headgear is required in accordance with USEF GR 801.

# 2021 NC STATE FAIR HUNTER JUMPER

## Information & Regulations

**Motorized Vehicles:** Minors who do not have a valid driver's license which allows them to operate a motorized vehicle in the state in which they reside will not be permitted to operate a motorized vehicle of any kind, including, but not limited to, golf carts, motorcycles, scooters, or farm utility vehicles, on the competition grounds of licensed competitions. Minors who have a valid temporary license may operate the above described motorized vehicles as long as they are accompanied by an adult with a valid driver's license. The parent/legal guardian or individual who signs the entry blank as a parent or guardian of a minor operating a motorized vehicle in violation of this rule are solely responsible for any damages, claims, losses or actions resulting from that operation. Violations of this rule will be cause for penalties against those responsible for the child committing the offense. Wheelchairs and other mobility assistance devices for individuals with disabilities are exempt from this rule.

The unsafe use of personal electronic transport devices, as determined by the competition officials and management in their sole discretion, that do not require a driver's license to operate, including but not limited to segways, hover boards, and single wheeled scooters is prohibited on competition grounds. Operating such devices in areas where people gather may be deemed "unsafe use" if there is a risk of harm to others. If the operator of the device is a minor, the parent/legal guardian or individual who signs the entry blank as a parent or guardian of a minor operating the device in violation of this rule is accountable and may be subject to penalties. Wheelchairs and other mobility assistance devices for individuals with disabilities are exempt from this rule.

**USEF Membership Statement:** Life, senior active and junior active members shall be eligible to participate in all classes at Regular Competitions, Eventing Competitions at the Modified Level or above and Combined Driving Competitions at the Advanced Level, Dressage, Reining and Vaulting Competitions and Endurance Rides. A nonmember may participate as a handler, rider, driver, owner lessee, agent, coach or trainer at Regular Competitions, Eventing Competitions, Dressage Competitions, Reining Competitions and Combined Driving Competitions upon payment of a \$45 Show Pass fee. Participants in the following classes are exempted from the Requirements of this rule: 1) leadline; 2) exhibitions; 3) games and races; 4) classes for 4-H members; 5) walk trot (exception: Friesian performance FR222) and academy classes (academy classes are classes limited to horses used regularly in a lesson program); 6) USDF introductory level tests, pas de deux and quadrille classes; 7) NRHA Endorsed Reining Competitions. 8) Opportunity classes, 9) citizens of other nations who have proof, in English, of current membership in good standing of their own National Federation, 10) USEA beginner novice division; and 11) assistant handlers in Dressage Sport Horse Breeding classes.

Reminder: All USEF Life and Senior Active members, as well as participants who have regular contact with minor athletes, are required to comply with the U.S. Center for SafeSport training requirement, to be eligible to participate in the competition. All participants must adhere to the U.S. Center for SafeSport Code, USEF Safe Sport Policy, and the Minor Athlete Abuse Prevention Policies. More information about these can be found at [www.usef.org](http://www.usef.org).

### Information and Stabling

Joan Petty ~ Manager (919) 669-9877

Sheri Bridges ~ Stall Reservations (919)556-7321

Steve Wilson, Stall Manager

[Horseshows@trianglefarms.com](mailto:Horseshows@trianglefarms.com)

eFax (866) 337-4229

### Stabling Order Form REQUIRED

Online Entries: [horseshowsonline.com](http://horseshowsonline.com)

Mail: Triangle Farms, Inc. PO Box 33189, Raleigh, NC 27636

FedEx/UPS: Hunt Horse Complex, 4601 Trinity Road, Raleigh NC 27607

*Thanks for showing with us . . .*

Triangle Farms, Inc.

Glenn & Joan Petty

## 2021 NC State Fair Featured Classes

### **Class 500 NC State Fair Equitation Cup Spectacular**

Open to Junior and Amateur riders

Fence heights: 3'3" & 3'6" ~ Minimum of 8 riders

To be shown over a course of not less than 8 obstacles, to include a combination and two changes of direction after the first obstacle; 1/3 of the obstacles must be oxers. Course to include at least 3 of the following: bending line, narrow jump, roll-back turn, fence at the end of the ring, long approach to a single jump. Two or more tests of at least the top 4 competitors are required, Tests 1-18. Entry Fee: \$50

Winner receives **FREE STALL** ~ Neck Ribbons & Awards to all Ribbon Winners

***Join us Sunday 11am – 12 noon ... Equitation Cup Ice Cream Social***

### **Class 501 \$1000 USHJA Green Hunter Incentive 3' & 3'3"**

### **Class 502 \$1000 USHJA Green Hunter Incentive 3'6" & 3'9"**

Open to horses of any age that are eligible to compete as a Green Hunter under Federation Rules. Horses must be enrolled in the USHJA Green Incentive Program and pay the annual enrollment fee.

Specifications [www.USHJA.com](http://www.USHJA.com)

*\$100 + USHJA fee*

Prize Money: \$300, \$220, \$130, \$80, \$60, \$50, \$40, \$30, \$30, \$20, \$20, \$20

### **Class 503 \$5000 USHJA National Hunter Derby**

Open to horses & ponies registered with the USHJA; riders, owners, trainers must be current active members of the USEF & USHJA. Fences set at 3' with 4 high-option fences 3'6". Two round format. First round Classic Hunter round; second round Handy Hunter round. The 12 highest-scoring horse/rider combinations after the first round are eligible to return for the second round. Formal attire required. Minimum 12 entries.

Specifications [www.USHJA.com](http://www.USHJA.com)

*\$250 + USHJA Fee*

Prize Money: \$1500, \$1100, \$650, \$400, \$300, \$250, \$200, \$150, \$150, \$100, \$100, \$100

***Join us Friday ... Derby Pizza Night***

### **Class 504 \$1500 USHJA Pony Hunter Derby**

Open to ponies registered with the USHJA; riders, owners, trainers must be current active members of the USEF and USHJA. Two round format. First round Classic Hunter round; second round Handy Hunter. The 12 highest-scoring after the first round are eligible to return for the second round. Minimum 12 entries.

Specifications [www.USHJA.com](http://www.USHJA.com)

*\$150 + USHJA Fee*

Prize Money: \$450, \$330, \$195, \$120, \$90, \$75, \$60, \$45, \$45, \$30, \$30, \$30

### **\$3500 NC State Fair Hunter Classics**

Hunter Classic specifications: Hunter Classics to be scored under the open numerical judging system, judged on performance, soundness, suitability, manners. Minimum of 12 entries. The 12 horses/ponies with the highest scores from the first round (\*\* First Round in schedule) will return to jump a second round over a different course. Each of the 2 rounds will count 50% toward the final score.

Prize Money \$500: \$150, \$110, \$75, \$50, \$45, \$35, \$25, \$10

Classic Entry Fee \$50

Prize Money \$1000: \$300, \$220, \$150, \$90, \$80, \$70, \$60, \$30

Classic Entry Fee \$100

### **Class 506**

### **\$500 NAL/WIHS Children's Hunter Classic**

### **Class 507**

### **\$500 NAL/WIHS Adult Hunter Classic**

### **Class 508**

### **\$1000 Junior/Amateur Owner Hunter Classic**

### **Class 509**

### **\$1000 State Fair Pony Hunter Classic**

### **Class 511**

### **\$500 Low Children/Adult Hunter Classic**



# 2021 NC STATE FAIR HUNTER JUMPER

## Featured Classes

### 2021 NC State Fair Featured Classes

#### Class 513

#### NC State Fair Lead Line

No Entry Fee

Open to Lead Line riders on horses and ponies. Precedes the NC State Fair Jumper Classic on Saturday.

### \$6500 NC State Fair Jumper Classics

Opened to junior and amateur riders only. To be conducted and scored under Table II2a. Time first jump off. Proper attire required. Minimum of 8 riders. Specifications: [www.ryegate.com](http://www.ryegate.com).

Class 442	\$1500 NAL/WIHS Children's Jumper Classic II2a 1.10-1.15m	Entry Fee: \$150
Class 445	\$1500 NAL/WIHS Adult Am Jumper Classic II2a 1.10-1.15m	Entry Fee: \$150
Class 448	\$1500 NAL Low Junior/Am/AO Jumper Classic II2a 1.20m	Entry Fee: \$150
Class 451	\$1500 Junior/Am/AO Jumper Classic II2a 1.30m	Entry Fee: \$150
	Prize Money: \$325, \$220, \$180, \$170, \$155, \$150, \$150, \$150	
Class 514	\$500 Mini Jumper Classic II2a .85m/.95m	Entry Fee: \$50
	Novice Ch/Ad Jumpers & Low Ch/Ad Jumpers showing at show	
	Prize Money: \$275, \$170, \$125, \$100, \$90, \$80, \$80, \$80	
	Rider must declare fence height in office	

### \$10,000 North Carolina State Fair Jumper Classic

Open to nominated horses. Scoring under Table II2a. Time First Jump Off 1.30m. Horses must be entered and declared by noon on Saturday. Order of Go to be drawn by the USEF Steward. All ties other than 1<sup>st</sup> place will be broken by the time and faults in the first round. Formal attire required.

#### Class 515 \$10,000 NC State Fair Jumper Classic II2a 1.30m

Entry Fee: \$300

Prize Money: \$2,900, \$2,200, \$1,150, \$850, \$750, \$600, \$425, \$425, \$350, \$350

Join us Saturday ... Jumper Night Wine & Cheese



## Join us as a Sponsor, Exhibitor, or Spectator at the 2021 'Jump for the Children' Horse Shows.

*Together we've raised \$2.6 Million for the kids at Duke Children's!!*



**'Jump for the Children' I – November 10-14**

**'Jump for the Children' II – November 17-21**

**Thank you** for pulling with us for the kids at Duke Children's!

Joan Petty, Co-Chairman

919-669-9877

[www.trianglefarms.com](http://www.trianglefarms.com)

**HUNTER DIVISIONS**

**\$1000 PERFORMANCE WORKING HUNTER 3'3"**

**Entry Fee: \$200 or \$50 per class.**

- |     |  |
|-----|--|
| 1-4 | Performance Working Hunter 3'3" – Handy in Class 4 |
| 5   | Performance Working Hunter 3'3" US                 |

**\$1000 PERFORMANCE WORKING HUNTER 3'6"**

**Entry Fee: \$200 or \$50 per class.**

- |     |  |
|-----|--|
| 6-9 | Performance Working Hunter 3'6" – Handy in Class 9 |
| 10  | Performance Working Hunter 3'6" US                 |

**\$2000 HIGH PERFORMANCE HUNTER 4'**

**Entry Fee: \$250 or \$50 per class**

- |       |  |
|-------|--|
| 11-14 | High Performance Working Hunter 4' – Handy in Class 14 |
| 15    | High Performance Working Hunter 4' US                  |

**\$2000 HIGH PERFORMANCE CONFORMATION 3'9"**

**Entry Fee: \$250**

- |       |   |
|-------|---|
| 16    | High Performance Conformation Model                   |
| 17-20 | High Performance Conf Hunter 3'9" – Handy in Class 20 |
| 21    | High Performance Conf Hunter 3'9" US                  |

**\$2000 GREEN CONFORMATION HUNTER 3'6"**

**Entry Fee: \$250**

- |       |  |
|-------|--|
| 22    | Green Conformation Model                           |
| 23-26 | Green Conformation Hunter 3'6" – Handy in Class 26 |
| 27    | Green Conformation Hunter 3'6" US                  |

**\$2000 GREEN HUNTER 3'6"**

**Entry Fee: \$250**

- |       |                                       |
|-------|---------------------------------------|
| 28-31 | Green Hunter 3'6" – Handy in Class 31 |
| 32    | Green Hunter 3'6" US                  |

**\$2000 GREEN HUNTER 3'9"**

**Entry Fee: \$250**

- |       |                                       |
|-------|---------------------------------------|
| 33-36 | Green Hunter 3'9" – Handy in Class 36 |
| 37    | Green Hunter 3'9" US                  |

**\$1000 GREEN HUNTER 3'3"**

**Entry Fee: \$200 or \$50 per class.**

- |       |                                       |
|-------|---------------------------------------|
| 38-41 | Green Hunter 3'3" – Handy in Class 41 |
| 42    | Green Hunter 3'3" US                  |

**\$1000 GREEN HUNTER 3'**

**Entry Fee: \$200 or \$50 per class.**

- |       |                                     |
|-------|-------------------------------------|
| 43-46 | Green Hunter 3' – Handy in Class 46 |
| 47    | Green Hunter 3' US                  |

**\$2000 JUNIOR HUNTER 3'3" 15 & Under**

**Entry Fee: \$250**

- |       |   |
|-------|---|
| 48-51 | Junior Hunter 3'3" 15 & Under – Handy in Class 51 |
| 52    | Junior Hunter 3'3" US 15 & Under                  |



# 2021

## NC STATE FAIR HUNTER JUMPER

## *Hunter Divisions*

### **\$2000 JUNIOR HUNTER 3'3" 16-17**

**Entry Fee: \$250**

53-56 Junior Hunter 3'3" 16-17 – Handy in Class 56  
57 Junior Hunter 3'3" US 16-17

### **\$2000 SMALL JUNIOR HUNTER 3'6" 15 & UNDER**

**Entry Fee: \$250**

58-61 Small Junior 3'6" 15 & Under – Handy in Class 61  
62 Small Junior 3'6" US 15 & Under

### **\$2000 SMALL JUNIOR HUNTER 3'6" 16-17**

**Entry Fee: \$250**

63-66 Small Junior 3'6" 16-17 – Handy in Class 66  
67 Small Junior 3'6" US 16-17

### **\$2000 LARGE JUNIOR HUNTER 15 & UNDER**

**Entry Fee: \$250**

68-71 Large Junior 3'6" 15 & U - Handy in Class 71  
72 Large Junior 3'6" US 15 & Under

### **\$2000 LARGE JUNIOR HUNTER 16-17**

**Entry Fee: \$250**

73-76 Large Junior 3'6" 16-17 – Handy in Class 76  
77 Large Junior 3'6" US 16-17

### **\$2000 AMATEUR-OWNER HUNTER 3'3" 18-35**

**Entry Fee: \$250**

78-81 Amateur Owner 3'3" 18-35 – Handy in Class 81  
82 Amateur Owner 3'3" 18-35 US

### **\$2000 AMATEUR-OWNER HUNTER 3'3" 36+**

**Entry Fee: \$250**

83-86 Amateur Owner 3'3" 36+ – Handy in Class 86  
87 Amateur Owner 3'3" 36+ US

### **\$2000 AMATEUR-OWNER HUNTER 3'6" 18-35**

**Entry Fee: \$250**

88-91 Amateur Owner 3'6" 18-35 – Handy in Class 91  
92 Amateur Owner 3'6" 18-35 US

### **\$2000 AMATEUR-OWNER HUNTER 3'6" 36+**

**Entry Fee: \$250**

93-96 Amateur Owner 3'6" 36+ – Handy in Class 96  
97 Amateur Owner 3'6" 36+ US

### **BABY GREEN HUNTER 2'6"**

**Entry Fee: \$165 or \$50 per class**

98-101 Baby Green Hunter 2'6"  
102 Baby Green US

### **\$500 SMALL HUNTER 3'**

**Entry Fee: \$190 or \$50 per class**

103-106 Small Hunter 3'  
107 Small Hunter 3' US

# 2021

## NC STATE FAIR HUNTER JUMPER

## *Hunter Divisions*

### pony Hunter Divisions

#### **\$1500 SMALL PONY HUNTER**

**Entry Fee: \$230**

Not exceeding 12.2 hands; Fences 2'3"

- 113-116 Small Pony - 25% conf in class 113. Handy in Class 116.
- 117 Small Pony Hunter US

#### **\$1500 MEDIUM PONY HUNTER**

**Entry Fee: \$230**

Over 12.2 and not to exceed 13.2 hands; Fences 2'6".

- 118-121 Medium Pony – 25% conf in class 118. Handy in Class 121.
- 122 Medium Pony Hunter US

#### **\$1500 LARGE PONY HUNTER**

**Entry Fee: \$230**

Over 13.2 and not to exceed 14.2 hands; Fences 3'

- 123-126 Large Pony – 25% conf in class 123. Handy in Class 126.
- 127 Large Pony Hunter US

#### **\$1000 LARGE GREEN PONY HUNTER**

**Entry Fee: \$210**

Over 13.2 and not to exceed 14.2 hands; Fences 2'9"

- 128-131 Large Green Pony Hunter – 25% conformation in class 131.
- 132 Large Green Pony Hunter US

#### **\$1000 SMALL/MEDIUM GREEN PONY HUNTER**

**Entry Fee: \$210**

Not to exceed 13.2 hands; Fences 2'3" for small ponies; 2'6" for medium ponies

- 133-136 Small/Med Green Pony – 25% conformation in class 136
- 137 Small/Medium Green Pony Hunter US

#### **CHILDREN'S PONY HUNTER**

**Entry Fee: \$165 or \$50 per class.**

- 138-141 Children's Pony Hunter
- 142 Children's Pony Hunter US

#### **\$500 ADULT AMATEUR HUNTER - Riders 50 & Over**

**Entry Fee: \$190 or \$50 per class.**

- 143-146 Adult Amateur Hunter 50+
- 147 Adult Amateur Hunter US

#### **\$500 ADULT AMATEUR HUNTER - Riders 36-49**

**Entry Fee: \$190 or \$50 per class.**

- 148-151 Adult Amateur Hunter 36-49
- 152 Adult Amateur Hunter US

#### **\$500 ADULT AMATEUR HUNTER - Riders 18-35**

**Entry Fee: \$190 or \$50 per class.**

- 153-156 Adult Amateur Hunter 18-35
- 157 Adult Amateur Hunter US

#### **OPEN HUNTER**

**Entry Fee: \$165 or \$50 per class**

- 257-260 Open Hunter 2'9", 3', 3'3"
- 261 Open Hunter US

# 2021

## NC STATE FAIR HUNTER JUMPER

## *Hunter Divisions*

### **\$500 CHILDREN'S HUNTER**

#### **Rider 14 & Under**

158-161 Children's Hunter -14 & under  
162 Children's Hunter US -14 & under

**Entry Fee: \$190 or \$50 per class**

#### **Rider 15-17**

163-166 Children's Hunter 15 - 17  
167 Children's Hunter US 15 - 17

### **LOW CHILDREN'S HUNTER**

Horse/pony/rider combination cannot cross enter into divisions or classes where fence heights exceed 2'6" at the same show. Ponies may not cross enter into the Children's Pony Division or the rated Regular Pony Hunter Division. Ponies shown in the Children's Hunter Pony section may not be shown by an adult at the same competition. Riders showing in the Children's Pony or Regular Pony Divisions may not cross enter into the Low Children's/Adult Hunter Division at the same show. To be judged on performance, manners, way of going, and soundness. Suitability of a Low Children's/Adult mount to be stressed. Fence heights to be 2'6". Distances between fences will be set using 12' multiples

**Entry Fee: \$165 or \$50 per class**

340 -343 Low Children's Hunter  
344 Low Children's Hunter US

### **LOW ADULT HUNTER**

**Entry Fee: \$165 or \$50 per class**

168-171 Low Adult Hunter  
172 Low Adult Hunter US

### **SHORT STIRRUP HUNTER**

Open to riders 12 years and younger. No rider may show in short stirrup for more than 2 years. Riders may not cross enter into any class at the same show where fences are set at 2'6" or higher. Fences 2'.

**Entry Fee: \$165 or \$50 per class.**

173-176 Short Stirrup Hunter  
177 Short Stirrup Hunter US

### **LONG STIRRUP HUNTER**

Open to riders 13 years and older on a horse or pony. Riders may not cross enter into any class at the same show where fences exceed 2'. No oxers or combinations. Fences 2'.

**Entry Fee: \$165 or \$50 per class.**

178-181 Long Stirrup Hunter  
182 Long Stirrup Hunter US

### **WALK TROT OPPORTUNITY CLASSES**

**Entry Fee: \$30 per class**

183 Walk Trot Equitation 184 Walk Trot Hunter U/S 185 Walk Trot Poles

### **BEGINNER CROSSRAILS OPPORTUNITY CLASSES**

Open to beginner riders of any age in their first or second year of showing over fences. Riders may not cross enter into any walk-trot or beginner walk-trot-canter divisions, or any divisions where the fences exceed 18" at that show. The division may be split 12 and under and 13 and over if entries warrant, but yearend points will not be separated. Course to consist of 8 jumps set as cross rails with flower boxes not to exceed 18".

**Entry Fee: \$30 per class**

187-188 Beginner Crossrails 18"  
189 Beginner Crossrails US

### **FALL HUNTER**

**Entry Fee: \$110 or \$50 per class**

250-251 Fall Hunter 2'9", 3', 3'3"  
252 Fall Hunter US

### **TAKE 2 THOROUGHBRED**

**Entry Fee: \$145 or \$50 per class**

253-255 Take 2 Thoroughbred 3'  
256 Take 2 Thoroughbred US

### **SPECIAL HUNTER**

**Entry Fee: \$110 or \$50 per class**

265-266 Special Hunter 2'6" & 3'  
267 Special Hunter US

# 2021

## NC STATE FAIR HUNTER JUMPER

## *Hunter Divisions*

### **2' USHJA HUNTER**

**Entry Fee: \$165 or \$50 per class.**

190-193 USHJA 2'  
194 USHJA 2' US

### **2'3" USHJA HUNTER**

**Entry Fee: \$165 or \$50 per class.**

195-198 USHJA 2'3"  
199 USHJA 2'3" US

### **2'6" USHJA HUNTER**

**Entry Fee: \$165 or \$50 per class.**

200-203 USHJA 2'6"  
204 USHJA 2'6" US

### **2'9" USHJA HUNTER**

**Entry Fee: \$165 or \$50 per class.**

205-208 USHJA 2'9"  
209 USHJA 2'9" US

### **3' USHJA HUNTER**

**Entry Fee: \$165 or \$50 per class.**

210-213 USHJA 3'  
214 USHJA 3' US

### **STATE FAIR HUNTERS**

**Entry Fee: \$110 or \$50 per class.**

215-216 State Fair Hunter 2'3" & 2'6"  
217 State Fair Hunter 2'3" & 2'6" US

**Entry Fee: \$110 or \$50 per class.**

218-219 State Fair Hunter 3' & 3'3"  
220 State Fair Hunter 3' & 3'3" US

**Entry Fee: \$110 or \$50 per class.**

221-222 State Fair Schooling Pony 2' & 2'6"  
223 State Fair Schooling Pony Hunter US

### **RALEIGH HUNTER**

**Entry Fee: \$110 or \$50 per class.**

224-225 Raleigh Hunter 2'6" & 2'9"  
226 Raleigh Hunter 2'6" & 2'9" US  
  
227-228 Raleigh Hunter 3' & 3'3"  
229 Raleigh Hunter 3' & 3'3" US

### **WARM UP SECTION**

**Entry Fee: \$40 per class**

230 Hunter Warm Up – Wed Indoor Ring  
231 Hunter Warm Up – Wed Ring II  
232 Hunter Warm Up - Thurs Indoor Ring  
233 Hunter Warm Up – Thurs Ring II  
234 Hunter Warm Up – Fri Ring III  
235 Hunter Warm Up – Fri Ring II  
237 State Fair Pony Warm Up – Fri Ring III  
238 Low Ch/Ad Warm Up – Friday Ring IV  
241 Hunter Warm Up – Fri Ring IV  
600 Jumper Blue/Red Warm Up – Wed Ring IV  
601 Jumper Blue/Red Warm Up – Thurs Ring IV  
602 Jumper Blue/Red Warm Up -Sat Ring IV  
603 Jumper Blue/Red Warm Up-Sun Ring IV

**EQUITATION MEDALS**

**Entry Fee: \$50**

**301 Dover Saddlery/USEF Hunter Seat Medal**

Open to Junior Members of the USEF. Fences 3'6". See USEF EQ 110.5 for specs.

**302 ASPCA Horsemanship**

Open to current members of the ASPCA National Horse Show. Trainers must also be current members. Fences 3'6". See USEF EQ110.8 for specs.

**303-305 Washington International Equitation Classic**

Open to junior members. Need not be a member of WIHS, but only members will earn points in the national rankings. See USEF EQ 110.10 for specs. Riders must have competed in both phases to be eligible for an overall placing. Same horse must be used in both phases. Fences 3'6".

**303 WIHS Equitation – Hunter Phase**

**304 WIHS Equitation – Jumper Phase**

**305 WIHS Equitation – Overall**

**306 Hamel Foundation 3'3" NHS Equitation**

Open to current members of the ASPCA National Horse Show. Trainers must also be current members. Fences 3'3". See USEF REQ 110.8 for specs.

**307 NCEA Equitation**

Open to junior riders. Fences 3'3". See [www.ryegate.com](http://www.ryegate.com) for specs.

**308 E.J. Haun Memorial Hunter Seat Equitation Medal**

Open to Junior Members of the NCHJA. Four competitors to fill the class. Three competitors must complete the course. Minimum of 3 or 25% shall be required to show both ways of the ring. Tests 1-19. Each phase counts 50%. Fences 3'6".

**309 Bryan Jones Memorial NCHJA Adult Medal**

Open to Amateur senior members of the NCHJA. Four competitors to fill a class and three must complete the course. Minimum of 3 or 25% of the class shall be required to show both ways of the ring. Tests 1-19. Each phase counts 50%. Fences 3'.

**310 NCHJA Children's Medal**

Open to junior members of the NCHJA. Four competitors to fill class and three must complete the course. Minimum of 3 or 25% shall be required to show both ways of the ring. Tests 1-19. Each phase to count 50%. Fences 3'.

**311 SCHJA Governor's Cup Equitation Class**

Open to junior members of the SCHJA. Five competitors to fill a class. Four or more riders must return for additional testing, which will count 25%. Fences 3'.

**312 THIS National Children's Medal**

Open to junior riders. Fences 3'. See [www.ryegate.com](http://www.ryegate.com) for specs.

**313 Ariat National Adult Medal**

Open to Adult Amateur riders. Fences 3'. See [www.ryegate.com](http://www.ryegate.com) for specs.

**314 Marshall & Sterling US Pony Medal Class**

Open to junior members of the USEF on ponies. Fences per height of pony. See USEF EQ 110.6 for specs.



**2021**  
**NC STATE FAIR**  
**HUNTER JUMPER**

*Equitation Section*

**315 NCHJA Equitation on Ponies**

Open to Junior Members of NCHJA. Four competitors to fill class, 3 competitors must complete the course. The judge may select as many riders as they wish to show both ways of the ring. Each phase to count 50%. Fences per regular pony division heights.

**316 WIHS Pony Equitation**

Open to junior members on ponies. Fences per height of pony. See USEF EQ 110.10 for specs

**350 USHJA 3'3" Hunter Seat Medal**

**455 EMO/USHJA 3'3" Jumping Seat Medal**

**Equitation Classes**

**Entry Fee: \$45**

- 317 Hunter Seat Equitation On The Flat, 11 & Under
- 318 Hunter Seat Equitation Over Fences, 11 & Under
- 319 Hunter Seat Equitation On The Flat, 12-14 Years
- 320 Hunter Seat Equitation Over Fences, 12-14 Years
- 321 Hunter Seat Equitation Over Fences, 15-17 Years
- 322 Hunter Seat Equitation On The Flat, 15-17 Years
- 323 Children's Pony Equitation Fences 2' & 2'6"
- 324 Children's Pony Equitation Flat
- 325 Short Stirrup Equitation On The Flat
- 326 Short Stirrup Equitation Over Fences 2'
- 327 Long Stirrup Equitation On The Flat
- 328 Long Stirrup Equitation Over Fences 2'
- 329 Low Adult Equitation on the Flat
- 345 Low Children's Equitation on the Flat
- 330 Low Adult Equitation Over Fences 2'6"
- 346 Low Children's Equitation Over Fences 2'6"



**Thanks**  
**for showing with us**  
**at the**  
**NC STATE FAIR**  
**HUNTER JUMPER SHOW**

# 2021

## NC STATE FAIR HUNTER JUMPER

# *Jumper Divisions*

### JUMPER DIVISION

Nominating Fee: To be eligible for classes set at 1.20m and above, a nominating fee of \$150 must be paid. All Jumper Divisions to be held in accordance with USEF Rules. Zone 3 specs.

Jump Order: A rotating jump order will be used. Any entry declared after the jump order has been posted, will be placed at the top of the order.

Ties: In all Jumper classes, ties will be broken by USEF specifications.

Championships: Will be awarded in all classes with 3 or more classes, unless noted otherwise. The last class (or highest prize money class) will receive bonus points.

Classics: May be combined if fewer than 10 entries. Formal attire required. Horse/rider combination must have been entered in at least one other class in the respective section. Jumper Prize Money awarded in accordance with JP 108. See Zone 3 specs for cross entry restrictions.

#### 0.75 Meter Jumper

401 0.75 Meter Jumper II2b  
402 0.75 Meter Jumper II2b  
403 0.75 Meter Jumper II2b

Entry Fee: \$45 per class

604 0.75 Meter Jumper II2b  
605 0.75 Meter Jumper II2b  
606 0.75 Meter Jumper II2b

#### 0.85 Meter Jumper

404 0.85 Meter Jumper II2b  
405 0.85 Meter Jumper II2b  
406 0.85 Meter Jumper II2b

Entry Fee: \$45 per class

607 0.85 Meter Jumper II2b  
608 0.85 Meter Jumper II2b  
609 0.85 Meter Jumper II2b

#### 0.95 Meter Jumper

407 0.95 Meter Jumper II2b  
408 0.95 Meter Jumper II2b  
409 0.95 Meter Jumper II2b

Entry Fee: \$45 per class

610 0.95 Meter Jumper II2b  
611 0.95 Meter Jumper II2b  
612 0.95 Meter Jumper II2b

#### 1.00 Meter Jumper

410 1.00 Meter Jumper II2b  
411 1.00 Meter Jumper II2b  
412 1.00 Meter Jumper II2b

Entry Fee: \$45 per class

613 1.00 Meter Jumper II2b  
614 1.00 Meter Jumper II2b  
615 1.00 Meter Jumper II2b

#### 1.05 Meter Jumper

413 1.05 Meter Jumper II2b  
414 1.05 Meter Jumper II2b  
415 1.05 Meter Jumper II2b

Entry Fee: \$45 per class

#### 1.10 Meter Jumper

416 1.10 Meter Jumper II2b  
417 1.10 Meter Jumper II2b  
418 1.10 Meter Jumper II2b

Entry Fee: \$45 per class

#### \$1000 1.20 Meter Jumper

422 \$250 1.20 Meter Jumper II2b  
423 \$250 1.20 Meter Jumper II2b  
424 \$500 1.20 Meter Jumper II2b

Entry Fee: \$35

Entry Fee: \$35

Entry Fee: \$50

#### \$1000 1.25 Meter Jumper

425 \$250 1.25 Meter Jumper II2b  
426 \$250 1.25 Meter Jumper II2b  
427 \$500 1.25 Meter Jumper II2b

Entry Fee: \$35

Entry Fee: \$35

Entry Fee: \$50

# 2021

## NC STATE FAIR HUNTER JUMPER

## *Schedule* WEDNESDAY, THURSDAY

### 2021 NC State Fair Hunter Jumper Show

#### Indoor

#### WEDNESDAY - 8:00AM

- 22 Green Conformation Model
- 16 High Performance Conf Model
- 230 Hunter Warm Up\*\*
- 1 Perf Working Hunter 3'3"
- 2 Perf Working Hunter 3'3"
- 5 Perf Working Hunter 3'3" US
- 6 Perf Working Hunter 3'6"
- 7 Perf Working Hunter 3'6"
- 10 Perf Working Hunter 3'6" US
- 11 High Perf Working Hunter 4'
- 12 High Perf Working Hunter 4'
- 15 High Perf Working Hunter 4' US
- 17 High Perf Conf Hunter 3'9"
- 18 High Perf Conf Hunter 3'9"
- 21 High Perf Conf Hunter 3'9" US
- 23 Green Conf Hunter 3'6"
- 24 Green Conf Hunter 3'6"
- 27 Green Conf Hunter 3'6" US
- 28 Green Hunter 3'6"
- 29 Green Hunter 3'6"
- 32 Green Hunter 3'6" US
- 33 Green Hunter 3'9"
- 34 Green Hunter 3'9"
- 37 Green Hunter 3'9" US
- 218 State Fair Hunter 3' & 3'3"
- 219 State Fair Hunter 3' & 3'3"
- 220 State Fair Hunter 3' & 3'3" US

#### Ring II

#### WEDNESDAY - 8:30AM

- 231 Hunter Warm Up\*\*
- 257 Open Hunter 2'9", 3', 3'3"
- 258 Open Hunter 2'9", 3', 3'3"
- 261 Open Hunter U/S
- 38 Green Hunter 3'3"
- 39 Green Hunter 3'3"
- 42 Green Hunter 3'3" US
- 43 Green Hunter 3'
- 44 Green Hunter 3'
- 47 Green Hunter 3' US
- 103 Small Hunter 3'
- 104 Small Hunter 3'
- 107 Small Hunter 3' US
- 253 Take 2 Thoroughbred 3'
- 256 Take 2 Thoroughbred 3' US

#### Ring III

#### WEDNESDAY - 8:30AM

- 190 USHJA 2'
- 191 USHJA 2'
- 194 USHJA 2' U/S

- 195 USHJA 2'3"
- 196 USHJA 2'3"
- 199 USHJA 2'3" U/S
- 200 USHJA 2'6"
- 201 USHJA 2'6"
- 204 USHJA 2'6" US
- 98 Baby Green Hunter 2'6"
- 99 Baby Green Hunter 2'6"
- 102 Baby Green Hunter 2'6" US
- 205 USHJA 2'9"
- 206 USHJA 2'9"
- 209 USHJA 2'9" US
- 210 USHJA 3'
- 211 USHJA 3'
- 214 USHJA 3' US

#### Ring IV

#### WEDNESDAY - 10:00AM

- 600 Blue Red Warmup
- 401 0.75 Meter Jumper II2b
- 402 0.75 Meter Jumper II2b
- 404 0.85 Meter Jumper II2b
- 405 0.85 Meter Jumper II2b
- 407 0.95 Meter Jumper II2b
- 408 0.95 Meter Jumper II2b
- 410 1.00 Meter Jumper II2b
- 411 1.00 Meter Jumper II2b
- 432 Take 2 TB Jumper 1-1.05m II2b
- 413 1.05 Meter Jumper II2b
- 414 1.05 Meter Jumper II2b
- 416 1.10 Meter Jumper II2b
- 422 1.20 Meter Jumper II2b
- 425 1.25 Meter Jumper II2b
- 428 1.30 Meter Jumper II2b

#### Indoor

#### THURSDAY - 8:00AM

- 232 Hunter Warm Up\*\*
- 3 Perf Working Hunter 3'3"
- 4 Perf Working Hunter 3'3" Handy
- 8 Perf Working Hunter 3'6"
- 9 Perf Working Hunter 3'6" Handy
- 13 High Perf Working Hunter 4'
- 14 High Perf Working 4' Handy
- 19 High Perf Conf Hunter 3'9"
- 20 High Perf Conf Hunter 3'9" Handy
- 25 Green Conf Hunter 3'6"
- 26 Green Conf Hunter 3'6" Handy
- 30 Green Hunter 3'6"
- 31 Green Hunter 3'6" Handy
- 35 Green Hunter 3'9"
- 36 Green Hunter 3'9" Handy
- 502 \$1000 Green Incentive 3'6"/3'9"
- 250 Fall Hunter 2'9", 3', 3'3"
- 251 Fall Hunter 2'9", 3', 3'3"
- 252 Fall Hunter U/S

# 2021

## NC STATE FAIR HUNTER JUMPER

## *Schedule* THURSDAY, FRIDAY

### 2021 NC State Fair Hunter Jumper Show

#### Ring II

##### THURSDAY - 8:30AM

- 233 Hunter Warm Up\*\*
- 259 Open Hunter 2'9", 3', 3'3"
- 260 Open Hunter 2'9", 3', 3'3"
- 40 Green Hunter 3'3"
- 41 Green Hunter 3'3"
- 45 Green Hunter 3'
- 46 Green Hunter 3'
- 501 **\$1000 Green Incentive 3'/3'3"**
- 105 Small Hunter 3'
- 106 Small Hunter 3'
- 254 Take 2 Thoroughbred 3'
- 255 Take 2 Thoroughbred 3'

#### Ring III

##### THURSDAY - 8:30AM

- 192 USHJA 2'
- 193 USHJA 2'
- 197 USHJA 2'3"
- 198 USHJA 2'3"
- 202 USHJA 2'6"
- 203 USHJA 2'6"
- 100 Baby Green Hunter 2'6"
- 101 Baby Green Hunter 2'6"
- 207 USHJA 2'9"
- 208 USHJA 2'9"
- 212 USHJA 3'
- 213 UISHJA 3'

#### Ring IV

##### THURSDAY - 8:30AM

- 601 Blue Red Warmup
- 403 0.75 Meter Jumper II2b
- 406 0.85 Meter Jumper II2b
- 409 0.95 Meter Jumper II2b
- 412 1.00 Meter Jumper II2b
- 431 Take 2 TB Jumper 1-1.05m II2b
- 433 Take 2 TB Jumper 1-1.05m II2b
- 415 1.05 Meter Jumper II2b
- 417 1.10 Meter Jumper II2b
- 440 1.10-1.15 Children's Jumper II2b
- 443 1.10-1.15 Adult Amateur Jumper II2b
- 423 1.20 Meter Jumper II2b
- 446 1.20 Low Jr/Am/AO Jumper II2b
- 426 1.25 Meter Jumper II2b
- 429 1.30 Meter Jumper II2b
- 449 1.30 Jr/Am/AO Jumper II2b

#### Indoor

##### FRIDAY - 8:00AM

- 304 WIHS Equitation/Jumper Phase
- 418 1.10 Meter Jumper II2b
- 424 1.20 Meter Jumper II2b
- 427 1.25 Meter Jumper II2b
- 430 1.30 Meter Jumper II2b
- 450 1.30 Jr/Am/AO Jumper II2b

- 447 Low Jr/Am/SO Jumper II.1
- 444 1.10-1.15 Adult Amateur Jumper II2b
- 441 1.10-1.15 Children's Jumper II2b

#### Course Change

##### 503 \$5000 USHJA National Derby

#### Ring II

##### FRIDAY - 8:30AM

- 235 Hunter Warm Up
- 224 Raleigh Hunter OF 2'6" & 2'9"
- 225 Raleigh Hunter OF 2'6" & 2'9"
- 226 Raleigh Hunter 2'6" & 2'9" US
- 227 Raleigh Hunter OF 3' & 3'3"
- 228 Raleigh Hunter OF 3' & 3'3"
- 229 Raleigh Hunter 3' & 3'3" US
- 306 Hamel Foundation NHS Equitation 3'3"
- 308 EJ Haun
- 303 WIHS Hunter Phase
- 301 Dover/USEF Hunt Seat Medal
- 350 USHJA 3'3" Hunter Seat Medal

#### Ring III

##### FRIDAY - 8:30AM

- 234 Hunter Warm Up
- 215 State Fair Hunter 2'3" & 2'6"
- 216 State Fair Hunter 2'3" & 2'6"
- 217 State Fair Hunter 2'3" & 2'6" US
- 237 State Fair Pony Warm Up 2' & 2'6"
- 221 State Fair Schooling Pony OF
- 222 State Fair Schooling Pony OF
- 223 State Fair Schooling Pony US
- 317 11 & Under Eq Flat
- 318 11 & Under Eq OF
- 315 NCHJA Pony Eq

#### Ring IV

##### FRIDAY - 10:00AM

- 550 Yearlings
- 551 Two-Year Olds
- 552 Three-Year Olds
- 553 Best Young Horse
- 554 Yearling Pony
- 555 Two-Year Old Pony
- 556 Three-Year Old Pony
- 557 Best Young Pony
- 241 Hunter Warm Up\*\*
- 265 Special Hunter 2'6" & 3'
- 266 Special Hunter 2'6" & 3'
- 267 Special Hunter 2'6" & 3' U/S
- 307 NCEA Eq
- 311 **SCHJA Governor's Cup**
- 319 12-14 Eq on the Flat
- 322 15-17 Eq on the Flat
- 320 12-14 Eq OF
- 321 15-17 Eq OF
- 238 Low Child/Adult Warm Up 2'6"





**HorseShowsOnline.com**

## **TimeSlice Technologies Corporation**



### **Show Management Software**

#### **Features**

**Secure Credit Card Processing & Card Vaulting  
Fully PCI Compliant**

**Online Entries - Free for Competitors**

**Online Add/Scratch for Competitors!**

**USEF electronic results submissions and  
membership verification!**

**Publish your shows FREE to  
HorseShowsOnline.com!**

#### **New - Favourite Shows!**

**Follow your shows on your mobile device using  
our new "Fave Show" feature!**

**Simply select the horses you wish to follow  
in the show.**

**Receive email schedules for your horses, receive  
updates as results are posted!**

**Available for single or multiple shows!**

**View results at  
HorseShowsOnline.com**

**The Professional's Choice**

**[sales@horseshowsonline.com](mailto:sales@horseshowsonline.com) 905-760-9997**



Make checks payable and mail to:  
Triangle Farms, Inc.  
PO Box 33189, Raleigh NC 27636  
919-556-7321 FAX 866-337-4229

## 2021 NC STATE FAIR HUNTER JUMPER

October 6-10, 2021

Please enclose copies of negative coggins test for all horses entered. State Law requires every horse on the grounds (showing or not) to show a current negative test in order to remain on the grounds. Each horse must be officially entered on an entry form

Horse Name				USEF #	Rider 1 Name	USEF #	NCHJA #	ASPCA #	Classes	
Green	Sex	Color	Foal	Height	Horse NCHJA #	Rider 2 Name	USEF #	NCHJA #	ASPCA #	Classes

I agree neither the NC State Fairgrounds, Triangle Farms, Inc., Glenn & Joan Petty, nor the Show Committee, nor the officials &/or staff of the show will be responsible for any accident, damage, loss or injury to mount, owner, rider or other persons or property. It will be the condition of entry that each exhibitor shall hold the horse show and its management blameless for any loss or accident to any animal, person or property that may occur from sickness, fire or otherwise at this show. Under North Carolina Law, an equine activity sponsor or equine professional is not liable for an injury to or the death of a participant in equine activities resulting exclusively from the inherent risks of equine activity Chapter 99E of the North Carolina Statutes.

United States Equestrian Federation, Inc. Entry Agreement I have read the United States Equestrian Federation, Inc. (the "Federation") Entry Agreement (GR906.4) as printed in the Prize List for the 2020 NC State Fair Hunter Jumper Show and agree to all of its provisions. I understand and agree that by entering this Competition, I am subject to Federation Rules, the Prize List, and local rules of the competition. I agree to waive the right to the use of my photos at the competition and agree that any actions against the Federation must be brought in New York State. Release, Assumption of Risk, Waiver and Indemnification. This Document waives important legal rights. Read it carefully before signing. I AGREE in consideration for my participation in the 2020 NC State Fair Hunter Jumper Horse Show, to the following: I AGREE that the "Federation" and "Competition" as used above include all of their officials, officers, directors, employees, agents, personnel, volunteers and affiliated organizations. I AGREE that I choose to participate voluntarily in the Competition with my horse, as a rider, driver, handler, vaulter, lessee, owner, agent, coach, trainer, or as parent or guardian of a junior exhibitor. I am fully aware and acknowledge that horse sports and the Competition involve inherent dangerous risks of accident, loss, and serious bodily injury including broken bones, head injuries, trauma, pain, suffering, or death ("Harm"). I AGREE to hold harmless and release the Federation and the Competition from all claims for money damages or otherwise for any Harm to me or my horse and for any Harm of any nature caused by me or my horse to others, even if the Harm arises or results, directly or indirectly, from the negligence of the Federation or the Competition. I AGREE to expressly assume all risks of Harm to me or my horse, including Harm resulting from the negligence of the Federation or the Competition. I AGREE to indemnify (that is, to pay any losses, damages, or costs incurred by) the Federation and the Competition and to hold them harmless with respect to claims for Harm to me or my horse, and for claims made by others for any Harm caused by me or my horse while at the Competition. I have read the Federation Rules about protective equipment, including GR801 and, if applicable, EV114, and I understand that I am entitled to wear protective equipment without penalty, and I acknowledge that the Federation strongly encourages me to do so while WARNING that no protective equipment can guard against all injuries. If I am a parent or guardian of a junior exhibitor, I consent to the child's participation and AGREE to all of the above provisions and AGREE to assume all of the obligations of this Release on the child's behalf. I represent that I have the requisite training, coaching and abilities to safely compete in this competition. I AGREE that if I am injured at this competition, the medical personnel treating my injuries may provide information on my injury and treatment to the Federation on the official USEF accident / injury report form. BY SIGNING BELOW, I AGREE to be bound by all applicable Federation Rules and all terms and provisions of this entry blank and all terms and provisions of this Prize List. If I am signing and submitting this Agreement electronically, I acknowledge that my electronic signature shall have the same validity, force and effect as if I affixed my signature by my own hand.

Stable With	Entry Fee Subtotal
Trainer:	# of stalls _____ \$225
Arrival:	Jumper Nomination \$150
Departure:	USEF Fee/Drug Fee \$23
	USHJA Fee \$7
Shavings:	USEF Show Pass \$45
Hay:	USHJA Show Pass \$30
	Service Fee per Horse \$50
	Non Stable/Grounds Fee \$50
Name:	Non Showing Fee \$50
Cell #:	Post Entry Fee \$50
Hotel:	Amount Enclosed
Closing Date: Oct. 1	Check or credit card payment required
Mail entries or enter online	<a href="http://www.horshowonline.com">www.horshowonline.com</a>
	<a href="http://www.trianglefarms.com">www.trianglefarms.com</a>
Stabling order form required for all entries mailed or online	

X	X	X	X
OWNER SIGNATURE (parent/trainer if under 18)	TRAINER SIGNATURE	RIDER 1 SIGNATURE (parent/trainer if und 18)	RIDER 2 SIGNATURE (parent/trainer if under 18)
NAME	NAME	NAME	NAME
USEF #	USEF #	USEF #	USEF #
STREET	STREET	STREET	STREET
CITY/ST/ZIP	CITY/ST/ZIP	CITY/ST/ZIP	CITY/ST/ZIP
CELL #	CELL #	CELL #	CELL #
EMAIL	EMAIL	EMAIL	EMAIL
SS #	SS #	SS #	SS #
Coach Name (Printed):		USEF #:	
Alternate Payer		SS #	
Address		Email	

USEF Competition Name:  
Competition Division(s) and Rating(s):

USEF#:

## FINALLY, THE INSURANCE YOU NEED AT A PRICE YOU CAN AFFORD



### HEALTH & INSURANCE BENEFITS



**Now with just a few clicks, you can purchase the valuable coverage you and your family need.**

You deserve the peace of mind that comes with having affordable, easy-to-understand benefits for you and your family. Now with your paid-fan or competing **USEF Membership**, you can sign up for a range of benefits from well-known, established insurance companies, with savings up to 35% or more!

### You Can Get Coverage For...



Individual/  
Family Health  
Insurance



Teledoc



Global Health  
Insurance



Personal Liability,  
Death & Disability  
Insurance



Group Health  
Insurance



Free Mental  
Health First Aid



Ground & Air  
Ambulance



Financial  
Lock



Dental, Vision, Disability, Accident,  
Critical Illness, and Life Insurance



Farm, Equine, & Pet Insurance

 These benefits can be customized for individuals, families, business owners, executives, and your employees

Visit **USEF.org/insurance** to learn more and find your rate today.  
Or call us at **(800) 349-1082** to speak with your USEF benefits team.



# 2021

## NC STATE FAIR HUNTER JUMPER

## Schedule SATURDAY

### 2021 NC State Fair Hunter Jumper Show

#### Indoor

#### SATURDAY -8:00AM

- 78 Amateur Owner 3'3" OF 18-35
- 79 Amateur Owner 3'3" OF 18-35\*
- 83 Amateur Owner 3'3" OF 36+
- 84 Amateur Owner 3'3" OF 36+\*
- 88 Amateur Owner OF 18-35 3'6"
- 89 Amateur Owner OF 18-35\* 3'6"
- 93 Amateur Owner OF 36+ 3'6"
- 94 Amateur Owner OF 36+\* 3'6"
- 302 ASPCA Horsemanship
- 58 Small Junior 3'6" 15 & Under
- 59 Small Junior 3'6" 15 & Under\*
- 63 Small Junior 3'6" 16-17
- 64 Small Junior 3'6" 16-17\*
- 68 Large Junior 3'6" 15 & Under
- 69 Large Junior 3'6" 15 & Under\*
- 73 Large Junior 3'6" 16-17
- 74 Large Junior 3'6" 16-17\*
- 48 Junior Hunter 3'3" 15 & Under
- 49 Junior Hunter 3'3" 15 & Under\*
- 53 Junior Hunter 3'3" 16-17
- 54 Junior Hunter 3'3" 16-17\*
- 508 **Junior/AO Classic (2nd)**
- 513 **NC State Fair Leadline**

#### Course Change

- 442 **\$1500 NAL/WIHS Child Jumper**
- 445 **\$1500 NAL/WIHS Adult Jumper**
- 448 **\$1500 NAL Low Jr/Am/AO**
- 451 **\$1500 Junior/Am/AO Classic II2a**
- 515 **\$10,000 NC State Fair Jumper**

#### Ring II

#### SATURDAY - 7:30AM

- 313 Ariat Adult Medal
- 143 Adult Amateur OF 50+
- 144 Adult Amateur OF 50+\*
- 148 Adult Amateur OF 36-49
- 149 Adult Amateur OF 36-49\*
- 153 Adult Amateur OF 18-35
- 154 Adult Amateur OF 18-35\*
- 507 **NAL/WIHS Adult Classic (2<sup>nd</sup>)**
- 312 THIS Children's Medal
- 158 Children's Hunter 14 & Under OF
- 159 Children's Hunter 14 & Under OF\*
- 163 Children's Hunter 15-17 OF
- 164 Children's Hunter 15-17 OF\*
- 506 **NAL/WIHS Child Classic (2<sup>nd</sup>)**

#### Ring III

#### SATURDAY 8:00AM

- 314 M&S USEF Pony Medal (l/m/s)
- 113 Small Pony Conf Hunter OF
- 114 Small Pony OF\*
- 117 Small Pony US
- 118 Medium Pony Conf Hunter OF
- 119 Medium Pony OF\*
- 122 Medium Pony US

- 123 Large Pony Conf Hunter OF
- 124 Large Pony OF\*
- 127 Large Pony US
- 509 **\$1000 State Fair Pony Classic**
- 131 Large Green Pony Conf OF
- 128 Large Green Pony OF\*
- 132 Large Green Pony US
- 136 Sm/Med Green Pony Conf OF
- 133 Sm/Med Green Pony OF\*
- 137 Sm/Med Green Pony US
- 323 Children's Pony Equitation OF
- 138 Children's Pony OF 2'-2'6"
- 139 Children's Pony OF
- 142 Children's Pony US
- 326 Short Stirrup Equitation OF 2'
- 173 Short Stirrup Hunter OF 2'
- 174 Short Stirrup Hunter OF 2'\*
- 177 Short Stirrup Hunter US
- 328 Long Stirrup Equitation OF 2'
- 178 Long Stirrup Hunter OF 2'
- 179 Long Stirrup Hunter OF 2'\*
- 182 Long Stirrup Hunter US
- 183 Opp Walk Trot Equitation
- 184 Opp Walk Trot Hunter US
- 185 Opp Walk Trot Poles
- 187 Opp Beginner Crossrails OF 18"
- 188 Opp Beginner Crossrails OF 18"
- 189 Opp Beginner Crossrails Hunter US

#### Ring IV

#### SATURDAY -7:30AM

- 602 Blue Red Warmup
- 604 0.75 Meter Jumper II2b
- 607 0.85 Meter Jumper II2b
- 608 0.85 Meter Jumper II2b
- 434 0.85m Novice Ch/Ad Jumper II2b
- 435 0.85m Novice Ch/Ad Jumper II.2
- 610 0.95 Meter Jumper II2b
- 613 1.00 Meter Jumper II2b
- 614 1.00 Meter Jumper II2b
- 475 Pony Jumper II2b 1.05m
- 476 Pony Jumper II.2 1.05m
- 437 1.00-1.05 Meter Low Ch/Ad Jumper
- 438 1.00-1.05 Meter Low Ch/Ad Jumper
- 455 **EMO/USHJA 3'3" Jumping Seat**

#### Course Change

- 330 Low Adult Eq OF 2'6"
- 168 Low Adult Hunter OF
- 169 Low Adult Hunter OF\*
- 172 Low Adult Hunter US
- 346 Low Child Eq OF 2'6"
- 340 Low Child Hunter OF
- 341 Low Child Hunter OF\*
- 344 Low Child Hunter US
- 511 **\$500 Low Child/Adult Hunter Classic (2nd)**

# 2021

## NC STATE FAIR HUNTER JUMPER

## Schedule SUNDAY

### 2021 NC State Fair Hunter Jumper Show

#### Indoor

#### SUNDAY - 8:00AM

##### 500 State Fair Eq Cup 3'3"/3'6"

- 60 Small Junior 3'6" 15 & Under
- 61 Small Junior 3'6" Handy 15 & U
- 62 Small Junior 3'6" US 15 & Under
- 65 Small Junior 3'6" 16-17
- 66 Small Junior 3'6" Handy 16-17
- 67 Small Junior 3'6" US 16-17
- 70 Large Junior 3'6" 15 & Under
- 71 Large Junior 3'6" Handy 15 & U
- 72 Large Junior 3'6" US 15 & Under
- 75 Large Junior 3'6" 16-17
- 76 Large Junior 3'6" Handy 16-17
- 77 Large Junior 3'6" US 16-17
- 50 Junior Hunter 3'3" OF 15 & U
- 51 Junior Hunter 3'3" Handy 15 & U
- 52 Junior Hunter 3'3" US 15 & U
- 55 Junior Hunter 3'3" OF 16-17
- 56 Junior Hunter 3'3" Handy 16-17
- 57 Junior Hunter 3'3" US 16-17
- 80 Amateur Owner 3'3" OF 18-35
- 81 Amateur Owner 3'3" Handy 18-35
- 82 Amateur Owner 3'3" US 18-35
- 85 Amateur Owner 3'3" OF 36+
- 86 Amateur Owner 3'3" Handy 36+
- 87 Amateur Owner 3'3" US 36+
- 90 Amateur Owner 3'6" OF 18-35
- 91 Amateur Owner 3'6" Handy 18-35
- 92 Amateur Owner 3'6" US 18-35
- 95 Amateur Owner 3'6" OF 36+
- 96 Amateur Owner 3'6" Handy 36+
- 97 Amateur Owner 3'6" US 36+

#### Ring II

#### SUNDAY - 7:30AM

- 309 Bryan Jones Adult Medal
- 147 Adult Amateur 50+ US
- 145 Adult Amateur 50+ OF
- 146 Adult Amateur 50+ OF\*
- 152 Adult Amateur 36-49 US
- 150 Adult Amateur 36-49 OF
- 151 Adult Amateur 36-49 OF\*
- 157 Adult Amateur 18-35 US
- 155 Adult Amateur 18-35 OF
- 156 Adult Amateur 18-35 OF\*
- 310 NCHJA Children's Medal
- 162 Children's Hunter 14 & Under US
- 160 Children's Hunter 14 & Under OF
- 161 Children's Hunter 14 & Under OF\*
- 167 Children's Hunter 15-17 US
- 165 Children's Hunter 15-17 OF
- 166 Children's Hunter 15-17 OF\*

#### Ring III

#### SUNDAY -7:30AM

##### 504 \$1500 USHJA Pony Derby

- 316 WIHS Pony Medal
- 115 Small Pony OF
- 116 Small Pony Handy
- 120 Medium Pony OF
- 121 Medium Pony Handy
- 125 Large Pony OF
- 126 Large Pony Handy
- 129 Large Green Pony OF
- 130 Large Green Pony OF
- 134 Sm/Med Green Pony OF
- 135 Sm/Med Green Pony OF
- 324 Children's Pony Eq Flat
- 140 Children's Pony OF 2' & 2'6"
- 141 Children's Pony OF 2' & 2'6"
- 325 Short Stirrup Eq Flat
- 175 Short Stirrup Hunter OF 2'
- 176 Short Stirrup Hunter OF 2'
- 327 Long Stirrup Eq Flat
- 180 Long Stirrup Hunter OF 2'
- 181 Long Stirrup Hunter OF 2'

#### Ring IV

#### SUNDAY -7:30AM

- 345 Low Child Eq Flat
- 342 Low Child Hunter OF
- 343 Low Child Hunter OF\*
- 329 Low Adult Eq Flat
- 170 Low Adult Hunter OF
- 171 Low Adult Hunter OF\*

#### Course Change

- 603 Blue Red Warmup
- 605 0.75 Meter Jumper II2b
- 606 0.75 Meter Jumper II2b
- 609 0.85 Meter Jumper II2b
- 436 0.85m Nov Ch/Ad Jumper II2b
- 611 0.95 Meter Jumper II2b
- 612 0.95 Meter Jumper II2b
- 615 1.00 Meter Jumper II2b
- 477 Pony Jumper II2b 1.05m
- 439 1.00-1.05m Low Ch/Ad Jumper II2b
- 514 \$500 Mini Jumper Classic II2a .85/1.00m**
- \*1st round score Classic

# 2021

## NC STATE FAIR HUNTER JUMPER

## *Jumper Divisions*

### **\$2000 1.30 Meter Jumper**

428	\$500 1.30 Meter Jumper II2b	Entry Fee: \$50
429	\$500 1.30 Meter Jumper II2b	Entry Fee: \$50
430	\$1000 1.30 Meter Jumper II2b	Entry Fee: \$80

### **TAKE 2 THOROUGHBRED JUMPER**

Entry Fee: \$45 per class

431	1.00-1.05m Take 2 TB Jumper II2b
432	1.00-1.05m Take 2 TB Jumper II2b
433	1.00-1.05m Take 2 TB Jumper II2b

### **NOVICE CHILD/ADULT JUMPER 0.85m**

Entry Fee: \$45 per class

434	Novice Child/Adult Jumper 0.85m II2b
435	Novice Child/Adult Jumper 0.85m II2b
436	Novice Child/Adult Jumper 0.85m II2b

### **LOW CHILD/ADULT JUMPER 1.00m – 1.05m**

Entry Fee: \$45 per class

437	Low Child/Adult Jumper
438	Low Child/Adult Jumper
439	Low Child/Adult Jumper

### **PONY JUMPER**

Entry Fee: \$45 per class

475	Pony Jumper 1.05m II2b
476	Pony Jumper 1.05m II.2
477	Pony Jumper 1.05m II2b

### **\$2500 CHILDREN'S JUMPER 1.10m – 1.15m**

440	\$500 Children's Jumper II2b	Entry Fee: \$50
441	\$500 Children's Jumper II2b	Entry Fee: \$50
442	\$1500 NAL/WIHS Children's Jumper Classic II2a	Entry Fee \$150

### **\$2500 ADULT AMATEUR JUMPER 1.10m – 1.15m**

443	\$500 Adult Amateur Jumper II2b	Entry Fee: \$50
444	\$500 Adult Amateur Jumper II2b	Entry Fee: \$50
445	\$1500 NAL/WIHS Adult Jumper Classic II2a	Entry Fee: \$150

### **\$2500 LOW JUNIOR/AMATEUR/AMATEUR OWNER JUMPER 1.20m**

446	\$500 Low Jr/Am/AO Jumper II2b	Entry Fee: \$50
447	\$500 Low Jr/Am/AO Jumper II.1	Entry Fee: \$50
448	\$1500 Low Jr/Am/AO Jumper Classic NAL II2a	Entry Fee: \$150

### **\$2500 JUNIOR/AMATEUR/AMATEUR OWNER JUMPER 1.30/1.40m**

449	\$500 Jr/Am/AO Jumper II2b	Entry Fee: \$50
450	\$500 Jr/Am/AO Jumper II2b	Entry Fee: \$50
451	\$1500 Jr/Am/AO Jumper Classic II2a	Entry Fee: \$150

Riders must declare fence height in show office





*Melissa*  
fotografie

# **Keep Calm and Be A #FenwickSuperhero**

Liquid Titanium® Far Infrared Technology



@fenwickequestrian

**2021**  
**NC STATE FAIR**  
**HUNTER JUMPER**

*Hunter Breeding*

**HUNTER BREEDING**

Horses and Ponies to be judged on conformation, way of moving, quality, substance, soundness and suitability to become, or in the case of sires and dams, apparent ability to produce or beget Hunters. Transmissible unsoundness is only to be considered in cases of sires and dams or prospective sires and dams. Yearlings, Two-Year Old and Three-Year Old are to Walk and Jog before being moved on the line in order of preference. First place winners in their respective classes to return for Best Young Horse and Best Young Pony.

550 Yearlings	Class Fee: \$35
551 Two-Year Olds	Class Fee: \$35
552 Three-Year Olds	Class Fee: \$35
553 Best Young Horse	Class Fee: None
554 Yearling Pony	Class Fee: \$35
555 Two-Year Old Pony	Class Fee: \$35
556 Three-Year Old Pony	Class Fee: \$35
557 Best Young Pony	Class Fee: None

## Why Join the TAKE2 Thoroughbred League?



**360+** Affiliated  
Hunter & Jumper Shows  
Nationwide

**\$10,000** Year-end High  
Score Awards  
and

**\$20,000** Hunter & Jumper Finals

**Go to [www.take2tbreds.com](http://www.take2tbreds.com) to join today!**



**Butch & Lucinda Human**

**Specializing in:**

- Farm/Ranch Property Insurance
- Equine Liability
- Horse Mortality & Major Medical
- Many other equine related coverages

**1-877-827-4480**

[info@starHinsurance.com](mailto:info@starHinsurance.com)

[www.starHinsurance.com](http://www.starHinsurance.com)

*We are horse people  
with 25 Years of  
insurance experience*

**The Golf Cart Guy**  
**919-465-3227**



**To guarantee your cart  
rental for the event,  
YOU MUST reserve online  
5 DAYS prior to the event**

[www.golfcartguyNC.com](http://www.golfcartguyNC.com)



**Allpony**

PLAY. LEARN. RIDE.

[allpony.com](http://allpony.com)

**HORSE LEARNING GAMES &  
GEAR FOR YOUNG RIDERS**



**JUMP THE MOON**  
A PICTURE BOOK FOR ALL AGES



This heartwarming true story about the bond between a girl and her pony will teach readers, young and old, the importance of trusting your heart, following your dreams, and never putting limits on what is possible.

BUY NOW AT [WWW.READJUMPTHEMOON.COM](http://WWW.READJUMPTHEMOON.COM)



**DOVER**  
SADDLERY®

*Proud Sponsor of*  
**Triangle Farms *and the*  
Jump for the Children  
Horse Shows**



1-800-989-1500 | [DoverSaddlery.com](http://DoverSaddlery.com)

Visit our store in Raleigh at 7920 Skyland Ridge Parkway.

Good luck to all Exhibitors & Owners!  
All ponies and horses are winners with  
NickerDoodles gourmet horse treats!



# NickerDoodles

~~Handmade Natural Horse Treats~~

Ask for them at your favorite Tack Shop, Show Mobile or Feed Store Today!

[www.NickerDoodles.com](http://www.NickerDoodles.com)

*Handmade in the Carolinas*  
• The Grazing Gourmet Company •



Made in the USA  
Veteran Owned



## STARBERRY ACRES

A PREMIER SPORT HORSE FACILITY

TRAINING BOARD ~ FARM BOARD ~ SALES ~ CLINICS ~ SHOWS ~ LESSONS

222 Starberry Lane • Mebane, NC 27302 • 919-395-1250 • [starberryacres.com](http://starberryacres.com)





# THE TACK ROOM

[WWW.TACKROOMONLINE.COM](http://WWW.TACKROOMONLINE.COM)

2530 Broad Street Camden, SC  
800-782-9583

.....  
Everything for the horse and rider.  
Come shop with us on the road,  
online, or at our flagship store in  
beautiful Camden, SC.





# Thank You Sponsors!

## Business Sponsors

---

Fenwick Equestrian  
NickerDoodles/Starberry Acres  
Dover Saddlery  
The Tack Room  
Hoof Print Construction Services  
Jump The Moon  
M&M Tack Shop  
Sidelines Magazine  
Star H Equine Insurance  
Dottie Burch, Equine Lawyer @ Ragsdale Liggett  
The Golf Cart Guy  
Burke Brothers Hardware  
Equestrian Buckle Belts  
Allpony  
Bemer Equine Set  
Shoo-Fly of NC

## Hotel Sponsors

---

Ramada Raleigh  
Hampton Inn & Suites – Raleigh  
Best Western Plus – Cary  
Four Points by Sheraton – Raleigh Arena



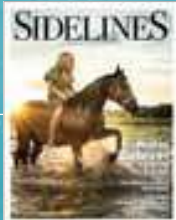
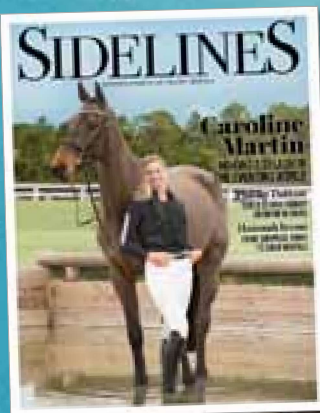
# M&M TACK SHOP

*Visit our tack shop  
located just around the corner from the  
Hunt Horse Complex*

615 Germantown Road, Raleigh NC 27607

[www.mmtackshop.com](http://www.mmtackshop.com)

919-851-0102



***Never  
Miss  
An  
Issue!***

***Subscribe  
now for  
\$9.95!***

***Order at [www.sidelinesmagazine.com](http://www.sidelinesmagazine.com)***

SIDELINES IS DEVOTED TO THE PEOPLE AND PERSONALITIES THAT MAKE THE HORSE WORLD EXCITING.



# NEW HOTEL

**FOUR  
POINTS**  
BY SHERATON

**Raleigh Arena**  
1200 Hurricane Alley Way  
Raleigh, NC 27607  
919.854.0502  
Marriott.com/RDULA

- Walking distance to Hunt Horse Complex
- Complimentary full breakfast
- Free parking
- Spacious guest rooms
- Seasonal outdoor pool
- First Point bar and restaurant
- Guest on-site laundry
- 24/7 business and fitness center
- Mini fridge in every room

**ASK FOR THE TRIANGLE FARMS  
RATE TO BOOK!**



1520 Blue Ridge Rd,  
Raleigh, NC 27607  
919.832.4100

[www.ramadaraleigh.com](http://www.ramadaraleigh.com)

**\$79.+tx King or Dbl Queen\***

~Less than 1 minute from Horse Complex~

109 Rooms w/ New Bedding  
12 Junior Suites  
Wireless Internet (All Areas)  
24 Hour Business Center  
Hot Breakfast Buffet  
Included with room

Full Service Restaurant &  
Lounge  
Room Service  
Outdoor Pool and Courtyard  
Exercise Room  
Guest Washer & Dryer

Pet Friendly Rooms Available by Request \$25+ tx pet fee/stay  
\*All specials and rates are based on availability. Horse Show  
rate does not include local taxes. May not be combined with  
any other group offer or promotional rate.

**YOU'RE SOMEONE SPECIAL AT RAMADA!**



**Hampton Inn & Suites  
Raleigh/Cary  
2 miles from the Hunt Horse Complex**

**Ask for the "Hunt Horse" rate to book now!**

**Refrigerator/Microwave/Internet  
Free Breakfast  
Coin Operated Laundry  
Outdoor Saltwater Pool  
Pet Friendly/No Deposit  
Pet Exercise Area**

*Newly Renovated ~ Full Bar*

**111 Hampton Woods Lane  
Raleigh, NC 27607  
919.233.1798  
[carysuites.hamptoninn.com](http://carysuites.hamptoninn.com)**

*It's Official...  
the Horse Shows are here!!*

**BW Best Western PLUS**  
from  
**\$72 \$84**  
Standard Suite  
+tax

- + **Free Hot Breakfast Buffet**
- + **Pet Friendly**
- + **Guest on-site Laundry**
- + **4 Miles to Horse Complex**
- + **Seasonal outdoor pool**
- + **Fitness/Business Center**
- + **All our Suites have a separate living room with 40" LG LCD TV plus a Full Kitchen.**

**1722 Walnut Street ~ Cary, NC 27511  
919.481.1200**

## Because Horse Trading Isn't What It Used to Be....

Handshakes don't always work out. Working with a lawyer to document your deals up front can help to avoid disputes altogether.



**Dottie Burch**  
North Carolina  
Equine Lawyer

dburch@rl-law.com  
919.881.2206  
www.rl-law.com

- Documentation Preparation and Review
- Dispute and Injury Resolution

**RAGSDALE & LIGGETT**

North Carolina Horse Council Board & Executive Committee  
Past Chairman of ABA Equine Law Subcommittee  
NCDRC Certified Mediator, Superior Court,  
Clerk of Court and Farm Nuisance



Family owned & operated  
since 1936

**5227 Hillsborough Street**  
(one block from the horse complex)

Monday - Friday  
7:30 am - 6:00 pm

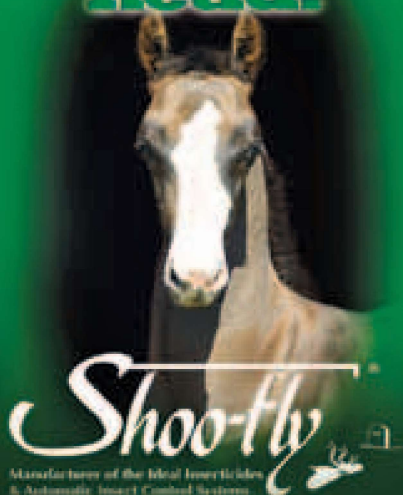
Saturday  
8:00 am - 5:30 pm

Sunday  
Noon - 5:00 pm

**919-851-1211**

 BurkeBrothersHardware

**Kills flies dead.**  
But won't harm a  
**hair**  
**on his**  
**head.**



Safely controlling flying insects for over 35 years.

**Shoo-Fly of NC • 919-259-1814**  
**www.shooflync.com**

**BEMER**  
GROUP



**HOW BEMER**

**CAN**

**BENEFIT**

**YOUR**

**HUNTER OR  
SHOWJUMPER**

To learn more

- call
- text
- email

Yvonne  
Peterson

704-724-3441

yvonne.peterson@bemermail.com





WWW.HOOFPRINTCONSTRUCTION.COM



## CONSTRUCTION IS OUR EXPERTISE, HORSES ARE OUR PASSION

At Hoof Print Construction we don't just build it, we live it. As avid equestrians ourselves, we know how much your horses mean to you. Whether you need a small horse barn or an entire commercial equestrian facility, Hoof Print Construction will bring your vision to life.

CALL TODAY FOR A FREE CONSULTATION

**(919) 427-0090**



## FROM LEADLINE TO ADULT, EQUESTRIAN BUCKLE BELTS HAVE STYLES THAT TURN HEADS.

Equestrian Buckle Belts



Equestrian Buckle Belts offers custom elastic belts in hundreds of color, pattern and buckle options. Now you can accessorize all your outfits with unique style both in and out of the barn!

[www.etsy.com/shop/equestrianbucklebelt](http://www.etsy.com/shop/equestrianbucklebelt)  
Instagram: @equestrianbucklebelts  
#equestrianbucklebelts #ebb #ebbforme

# 2021 NORTH CAROLINA STATE FAIR PREMIER HUNTER JUMPER SHOW

## Stabling Order Form

### October 6-10, 2021

	Owner/Horse	# Stalls	Bedding	Arrival
1				
2				
3				
4				
5				
6				
7				
8				
9				
10				
11				
12				
13				
14				
15				
16				

Trainer \_\_\_\_\_ Cell # \_\_\_\_\_

Email \_\_\_\_\_

Arrival \_\_\_\_\_ Hotel \_\_\_\_\_

Comments \_\_\_\_\_

#### NC State Fair Stall Reservations

Sheri Bridges      919-556-7321      [sheri@trianglefarms.com](mailto:sheri@trianglefarms.com)

**Trainers should make reservations by the closing date of Oct. 1 to ensure priority stabling and to have bedding available upon arrival.** Outside customers who wish to be stabled with a trainer need to be included on the Trainers Stabling Order Form.  
Move in Monday after 12 noon.

Email to [horseshows@trianglefarms.com](mailto:horseshows@trianglefarms.com) or Efax to 866-337-4229

Triangle Farms, Inc., PO Box 33189, Raleigh NC 27636

[www.trianglefarms.com](http://www.trianglefarms.com)      919-556-7321

**Stabling Order Form is required for Online Entries**

**Enter Online ~ [www.horseshowsonline.com](http://www.horseshowsonline.com)**

Triangle Farms, Inc. accepts Credit Cards

# JoanMacNairPetty

NC Realty, LLC

4915 Waters Edge Drive  
Suite 185  
Raleigh, NC 27606  
(919) 669-9877  
joan.petty@me.com

~Representing NC Homes, Horse Farms  
& Estate Properties~  
Personal Service and Experience

**Buying or Selling...**  
**Joan is back in North Carolina**  
**and can help you with**  
**all your real estate needs**



Cam Womble, Trainer (919) 426-5722  
trianglefarms.com (919) 556-7321  
3301 Silver Water Lane  
Wake Forest, NC



**Exceptional Horse Care & Training**  
**Developing Advanced Beginners & Experienced Riders**  
**for showing in NCHJA & USEF Shows**

*BOARDING, TRAINING, LESSONS, SHOWING*





**TRIANGLE FARMS**  
HORSESHOWS



**2021-22**  
**CALENDAR**



*NC State Fair Hunter & Jumper AA*  
Oct 6-10, 2021

*Triangle Farms Indoors C Finale*  
Nov 5-7, 2021

*'Jump for the Children' Duke I AA*  
Nov 10-14, 2021

*'Jump for the Children' Duke II AA*  
Nov 17-21, 2021

*Raleigh Indoors Holiday Classic A*  
Dec 28-31, 2021

*Triangle Winter Indoors I C*  
Jan 21-23, 2022

*Raleigh Indoors Winter I A*  
Jan 27-30, 2022

*Triangle Winter Indoors II C*  
Feb 18-20, 2022

*Raleigh Indoors Winter Classic A*  
Feb 24-27, 2022

*Triangle Spring Indoors I C*  
March 11-13, 2022

*Raleigh Indoors Spring Classic A*  
March 17-20, 2022

*Triangle Spring Indoors II C*  
Apr 1-3, 2022

*Triangle Outdoors Spring Fling C*  
Apr 22-24, 2022

*Sandhills Spring Classic A*  
May 19-22, 2022

*Triangle Farms, Inc.*  
*Joan Petty*  
(919) 556-7321 (919) 669-9877

horseshow@trianglefarms.com  
www.trianglefarms.com







*Triangle Farms~PO Box 33189~Raleigh, NC 27636*

PRSRT STD  
US Postage  
**PAID**  
Raleigh, NC  
Permit No. 1910

*Come Show With Us...*